

PATIENTS' CHARACTERISTICS

Age Distribution

Gender Distribution

Number (%) of Surgeries Done by Month

Number Surgery by Centre

Distribution of Care Setting by Centre

Number of Patient With Ocular Co-Morbidity

Number of Patient with Systemic Co-Morbidity

Pre-Operative Visual Acuity Measurement

Causes of Cataract

1. PATIENTS' CHARACTERISTICS

Table 1.1: Age distributions

Age, years	N=3016
Mean	64.1
Median	66
Minimum	0.3 (4 months)
Maximum	97
% Distributions	
Age group	
<1 year	0
1-14 years	1
15-24 years	1
25-34 years	1
35-44 years	3
45-54 years	11
55-64 years	27
65-74 years	38
75-84 years	16
>=85 years	2

Figure 1.1: Age distributions

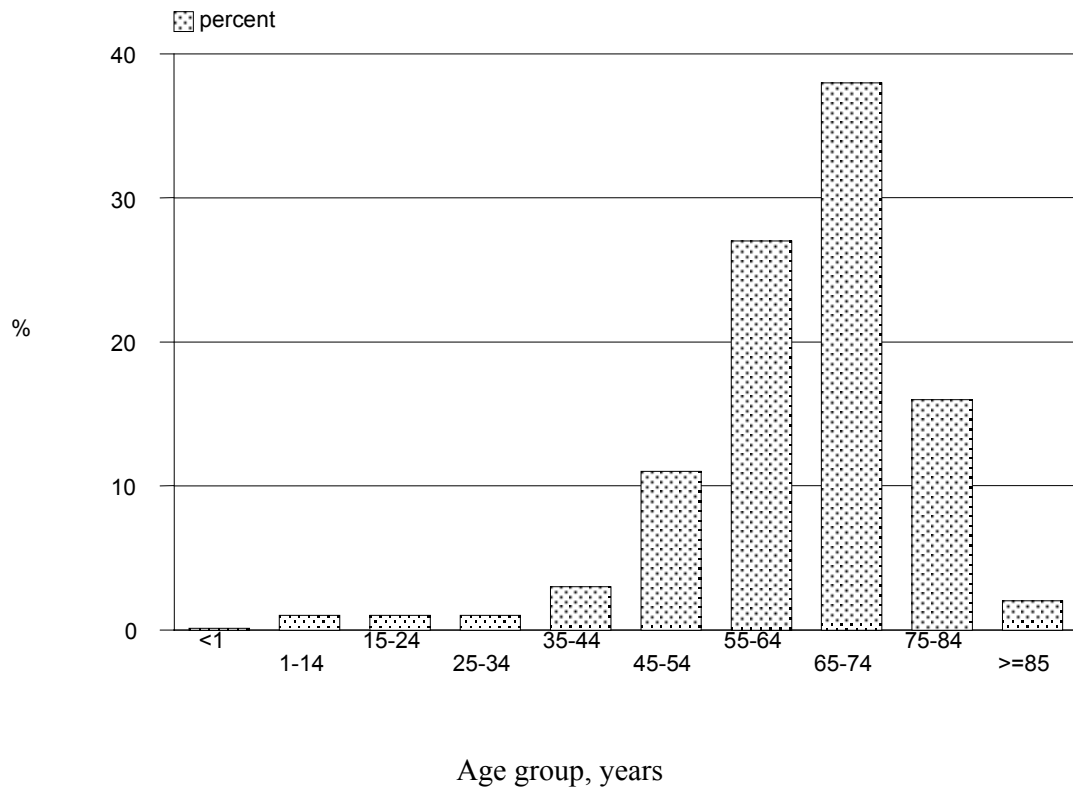


Table 1.2: Gender distributions

Gender	N=3016
	%
Male	50
Female	50

Table 1.3: Number (%) of surgery done by month

Month	No.	%
N	3016	100
January	1049	35
February	815	27
March	1152	38

Figure 1.3: Number (%) of surgery

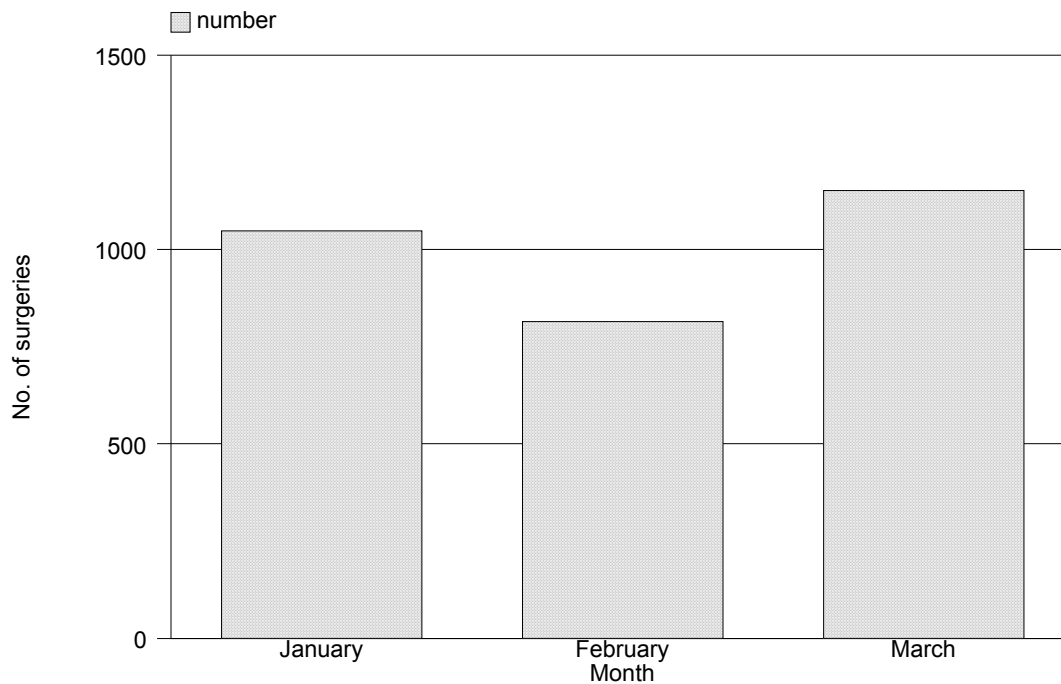


Table 1.4: Number of surgery done by centre

Centre	No.	%
All sites	3016	100
A	15	0.5
B	252	8
C	30	1
D	82	3
E	321	11
F	129	4
G	189	6
H	248	8
I	23	1
J	124	4
K	240	8
L	140	5
M	183	6
N	52	2
O	234	8
P	89	3
Q	105	3
R	33	1
S	111	4
T	139	5
U	207	7
V	70	2

Figure 1.4: Number of surgery done by centre

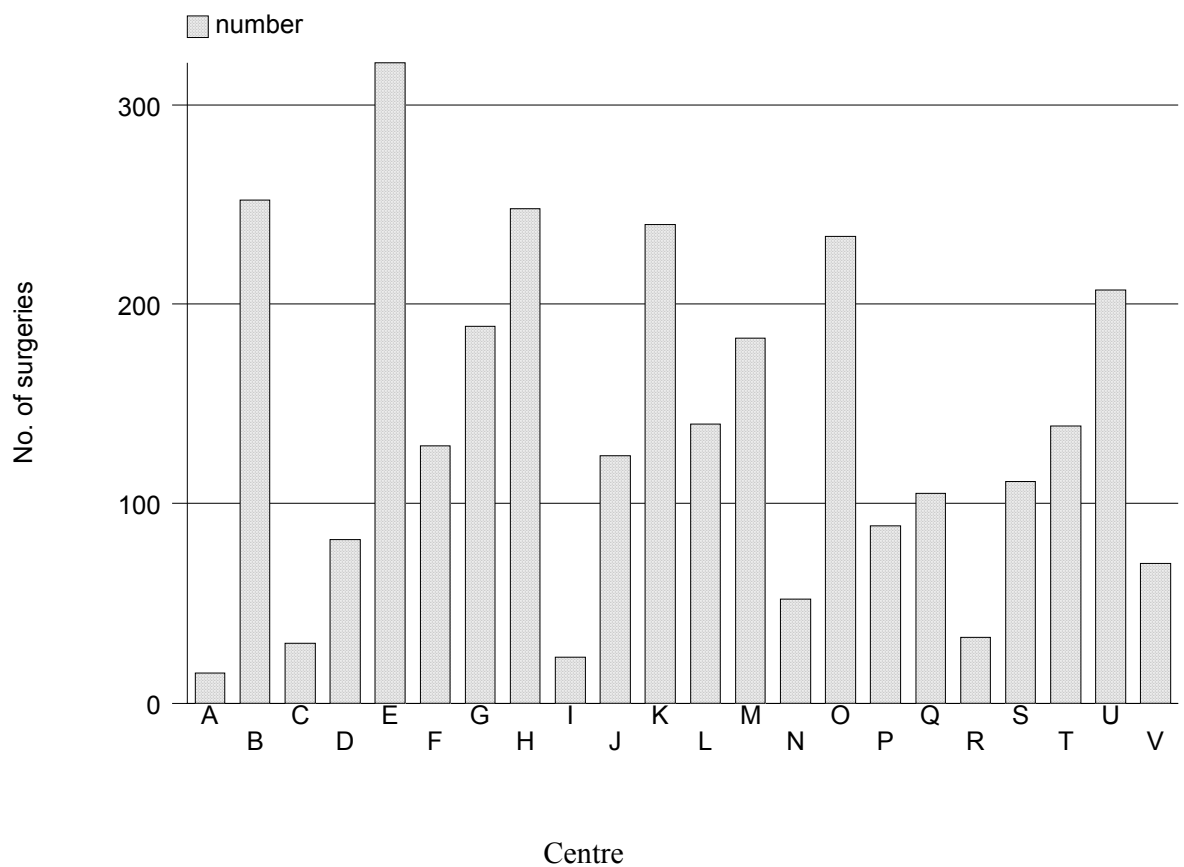


Table 1.5: Distribution of care setting by centre

Centre	Care setting		
	N	% Day care	% In-patient
All sites	3016	35	65
A	15	0	100
B	252	16	84
C	30	0	100
D	82	6	94
E	321	89	11
F	129	65	35
G	189	74	26
H	248	83	17
I	23	0	100
J	124	2	98
K	240	57	43
L	140	11	89
M	183	7	93
N	52	0	100
O	234	15	85
P	89	19	81
Q	105	6	94
R	33	0	100
S	111	16	84
T	139	38	62
U	207	0	100
V	70	0	100

Figure 1.5: Distribution of day care and in patient by centre

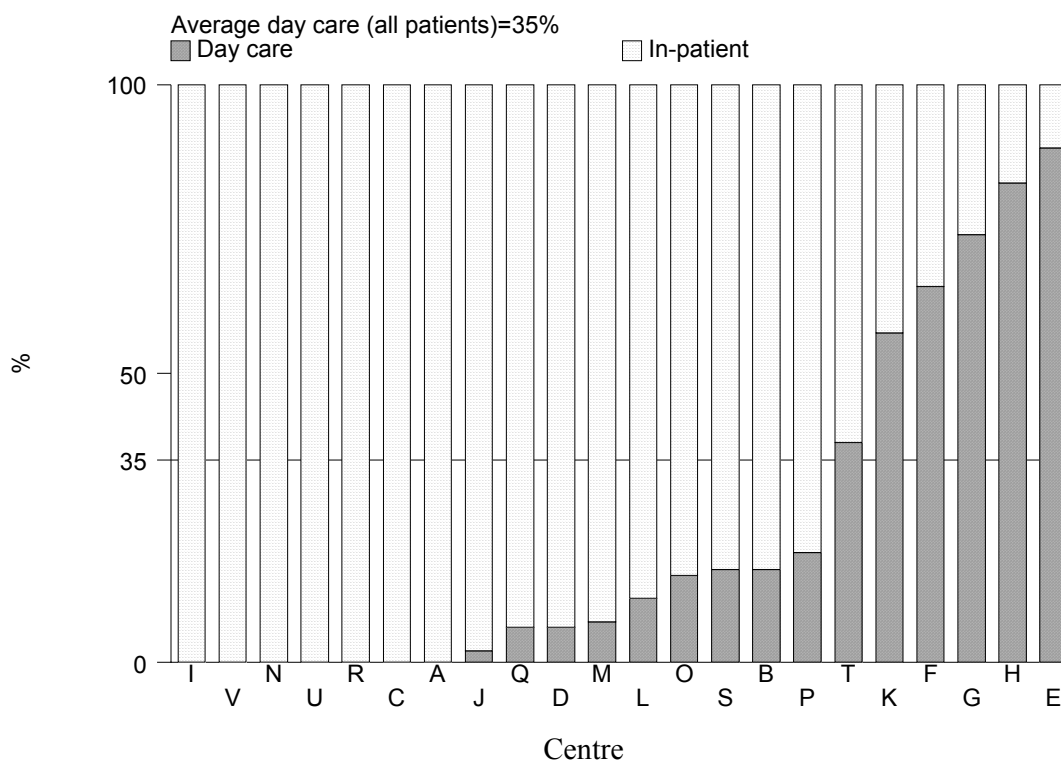


Table 1.6: Number of patients with first eye and second eye surgery

Type of surgery	No.	%
N	3016	100
First eye	2119	70
Second eye	897	30

Table 1.7: Number of patients with ocular co-morbidity

Patients with ocular co-morbidity	No.	%
N	3016	100
Patients with any ocular co-morbidity	847	28
Patients with specific ocular co-morbidity		
Anterior segment		
1.Pterygium involving the cornea	115	4
2.Corneal opacity	54	2
3.Glaucoma	188	6
4.Chronic uveitis	18	1
5.Pseudoexfoliation	38	1
Len related complications		
1.Phacomorphic	26	1
2.Phacolytic	13	0
3.Subluxated/Disclosed	23	1
Posterior segment		
1.Diabetic Retinopathy: Non Proliferative	152	5
2.Diabetic Retinopathy: Proliferative	42	1
3.Diabetic Retinopathy: CSME	20	1
4.Diabetic Retinopathy: Vitreous haemorrhage	20	1
5.ARM	35	1
6.Other macular disease (includes hole or scar)	17	1
7.Optic nerve disease, any type	9	0
8.Retinal detachment	18	1
9.Cannot assessed	146	5
Miscellaneous		
1.Amblyopia	13	0
2.Significant previous eye trauma	18	1
3.Pre-existing non glaucoma field defect	0	0
Other	84	3

Table 1.8: Number of patients with systemic co-morbidity

Patients with systemic co-morbidity	No.	%
N	3016	100
Patients with any systemic co-morbidity	1644	55
Patients with specific systemic co-morbidity		
1.Hypertension	998	33
2.Diabetes Mellitus	843	28
3.Ischaemic Heart Disease	278	9
4.Renal Failure	51	3
5.Cerebrovascular accident	19	1
6.COAD/Asthma	169	6
7.Hansen's Disease	3	0
8.Allergies	12	0
Other	193	6

Table 1.9: Pre-operative visual acuity measurement

Pre-operative VA	Unaided		Refracted	
	N=2997	100%	N=260	100%
	No.	%	No.	%
6/5	0	0	0	0
6/6	1	0	4	2
6/9	15	1	20	8
6/12	41	1	33	13
6/18	105	4	30	12
6/24	189	6	27	10
6/36	253	8	29	11
6/60	327	11	28	11
5/60	45	2	4	2
4/60	39	1	5	2
3/60	63	2	6	2
2/60	110	4	6	2
1/60	192	6	10	4
CF	628	21	19	7
HM	737	25	32	12
PL	246	8	7	3
NPL	6	0	0	0

Figure 1.9: Pre-operative visual acuity measurement

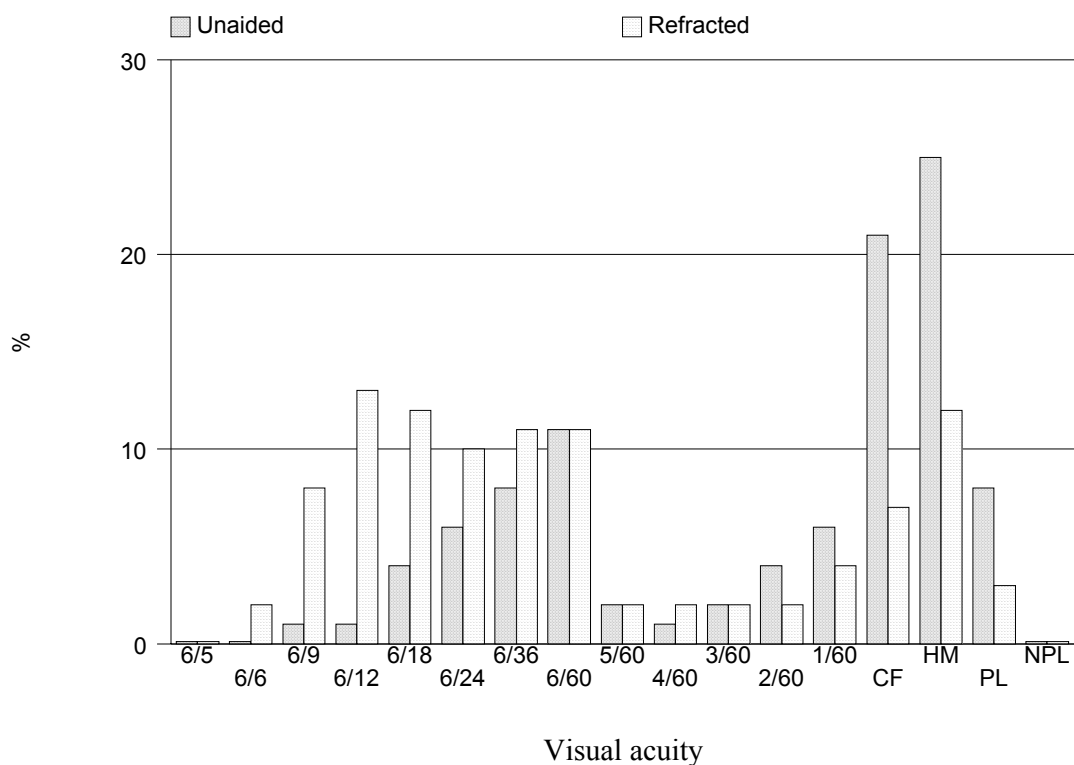


Table 1.10: Causes of cataract

Causes of Cataract	No.	%
N	3011	100
Primary cataract		
Senile/age related	2795	93
Congenital	20	1
Development	44	1
Other	17	1
Secondary cataract		
Trauma	98	3
Drug induced	11	0
Surgery induced	6	0
Other	20	1